

PUTTING CHILDREN FIRST



International
COCOA
Initiative

Strategies for Tackling Child Labour in the West African Cocoa Sector

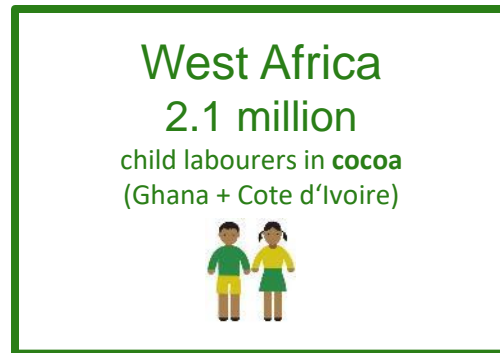
Presentation to GISCO Annual General Meeting, Berlin, 4th May 2017

STRATEGIES FOR TACKLING CHILD LABOUR IN COCOA

1. **CONTEXT – Scale & Complexity**
2. **ICI STRATEGY 2015 – 2020**
3. **RESPONSIBLE SUPPLY CHAIN MANAGEMENT**
 - **Tools & Approaches**
 - **Results**
4. **CHILD-CENTERED COMMUNITY DEVELOPMENT**
 - **Tools & Approaches**
 - **Results**
5. **COMBINING PREVENTION & RESPONSE**
6. **MULTI-STAKEHOLDER COLLABORATION
(linking to National Policy Frameworks)**

CONTEXT

SCALE OF CHILD LABOUR IN COCOA

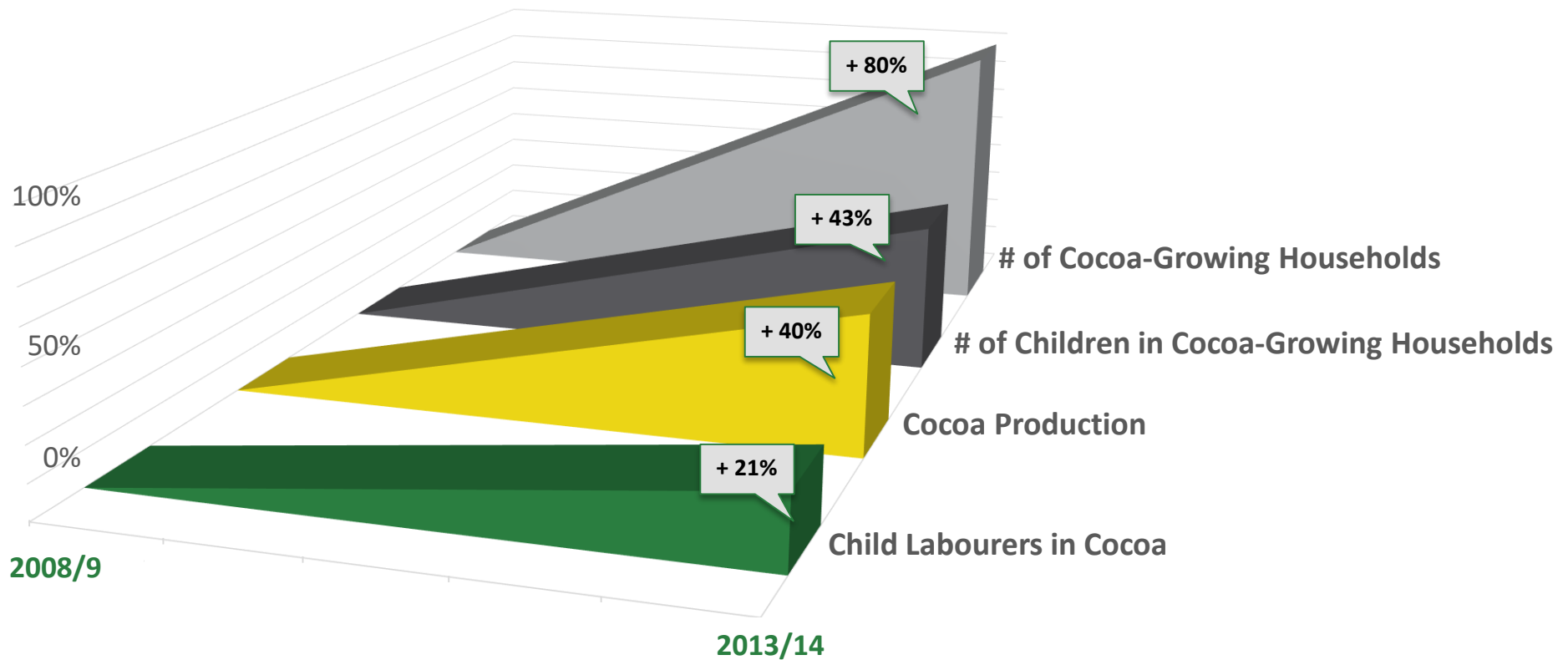


**NOT UNIQUE TO COCOA, BUT
COCOA-SPECIFIC DRIVERS....**

- Labour intensive crop
- Smallholder farms
- Fragmented supply-chain
- Migration
- Low yields & low farmer income
- Poverty
- Poor social infrastructure
- Rule of Law in remote cocoa areas

**...AND BOTH A SYMPTOM AND
CAUSE OF AN UNSUSTAINABLE
SUPPLY-CHAIN.**

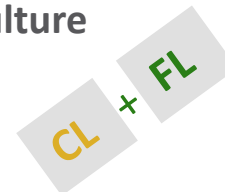
THE TRAJECTORY OF THE PROBLEM





Soft Law – Voluntary Principles

- 2011 USDA Guidelines to Eliminate Child Labor and Forced Labor in Agriculture
- 2012 UN Guiding Principles on Business and Human Rights
- 2015 OECD/FAO Guidance for Responsible Agricultural Supply-chains



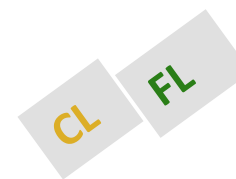
Hard Law – Obligation to Report

- 2010 California Transparency in Supply Chains Act – in force
- 2015 UK Modern Slavery Act (MSA) – in force
- 2016 US Repeal of Consumptive Demand Exemption (US Tariff Act of 1930) - in force
- 2017 Australian Government launches formal enquiry into MSA



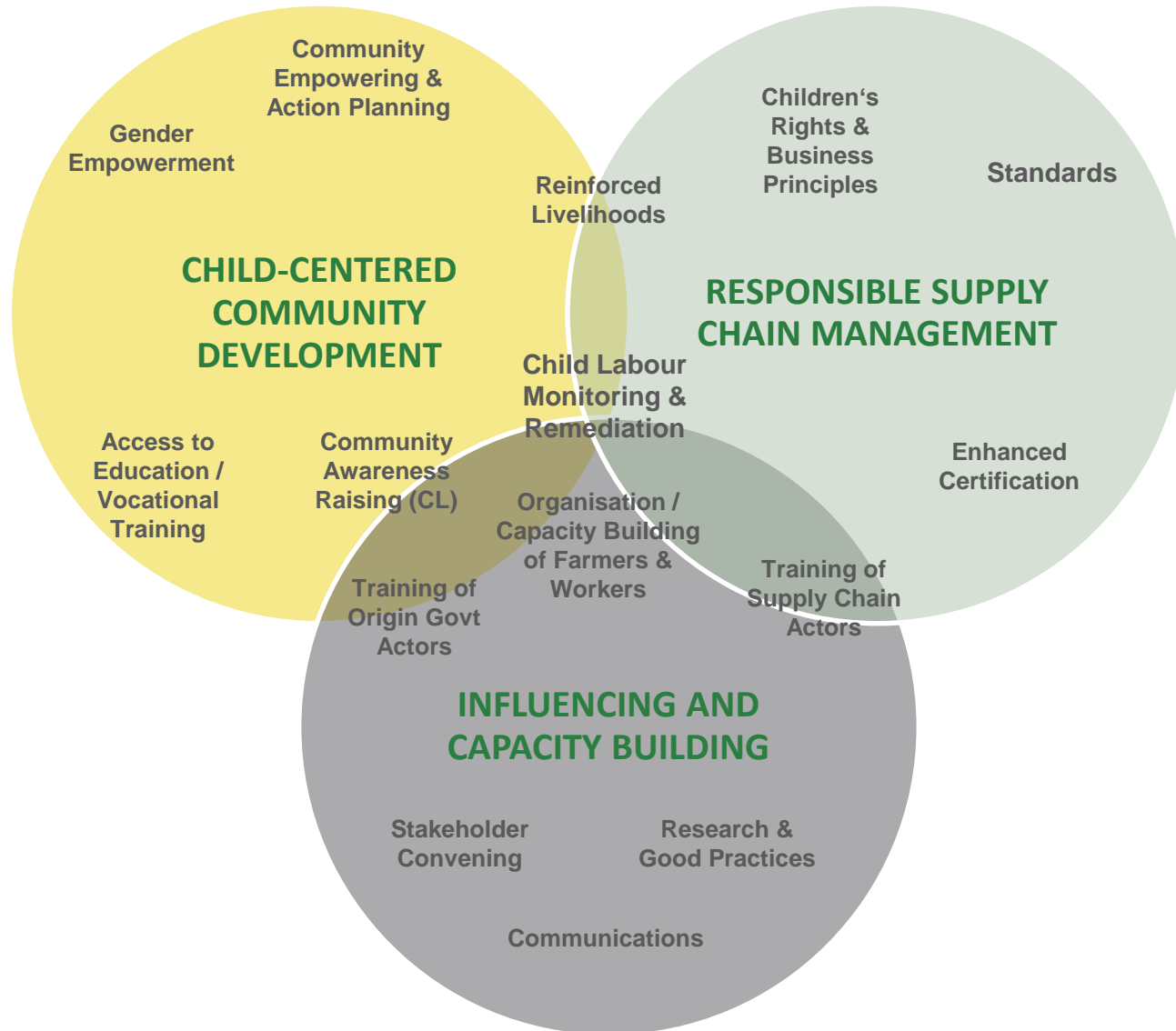
Hard Law – Obligation to Report & to Act

- 2017 French Law on Due diligence in Supply-Chains - adopted by Parl.
- 2017 Dutch Law on Due diligence in Supply-Chains - adopted by Parl.



ICI-STRATEGY 2015 - 2020

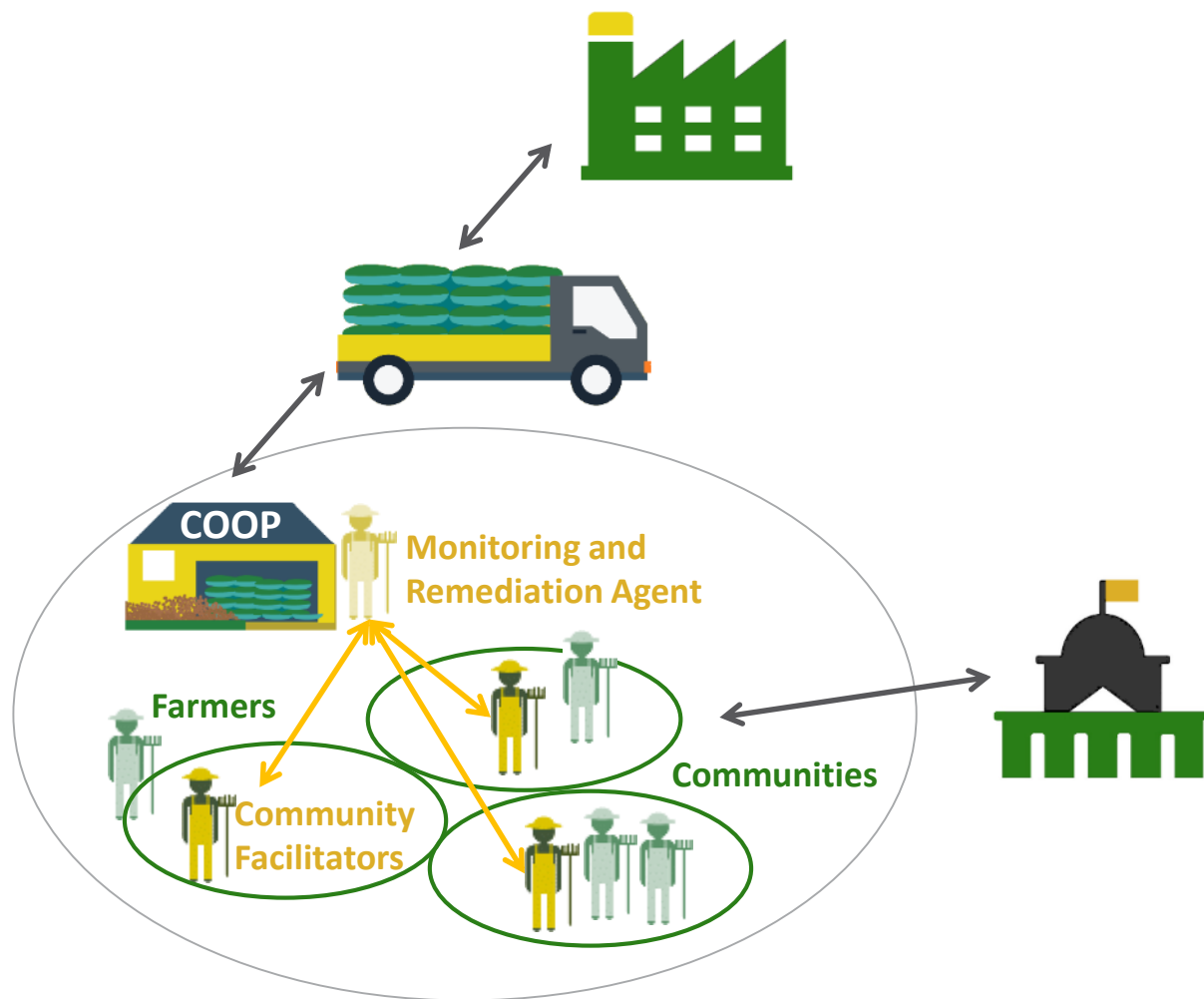
IMPROVED PROTECTION FOR 1 MILLION CHILDREN LIVING IN COCOA-GROWING COMMUNITIES BY 2020



ICI TOOLS AND APPROACHES

- Responsible Supply Chain Management

ICI's SUPPLY-CHAIN CHILD LABOUR MONITORING & REMEDIATION SYSTEM (CLMRS)



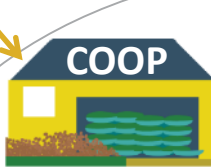
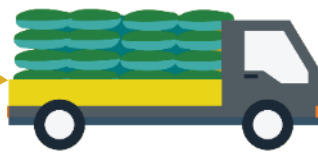
ICI's SUPPLY-CHAIN CHILD LABOUR MONITORING & REMEDIATION SYSTEM (CLMRS)



ICI training of CF/MRA/suppliers +
+ Awareness-raising of farmers & communities
+ Information of local authorities

ICI's SUPPLY-CHAIN CHILD LABOUR MONITORING & REMEDIATION SYSTEM (CLMRS)

ICI managed data hub

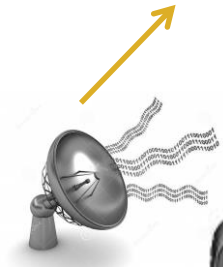


Monitoring and Remediation Agent

Farmers

Communities

Community Facilitators

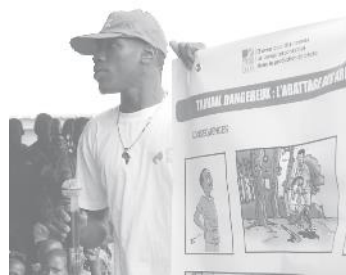


Data-transfer via mobile network

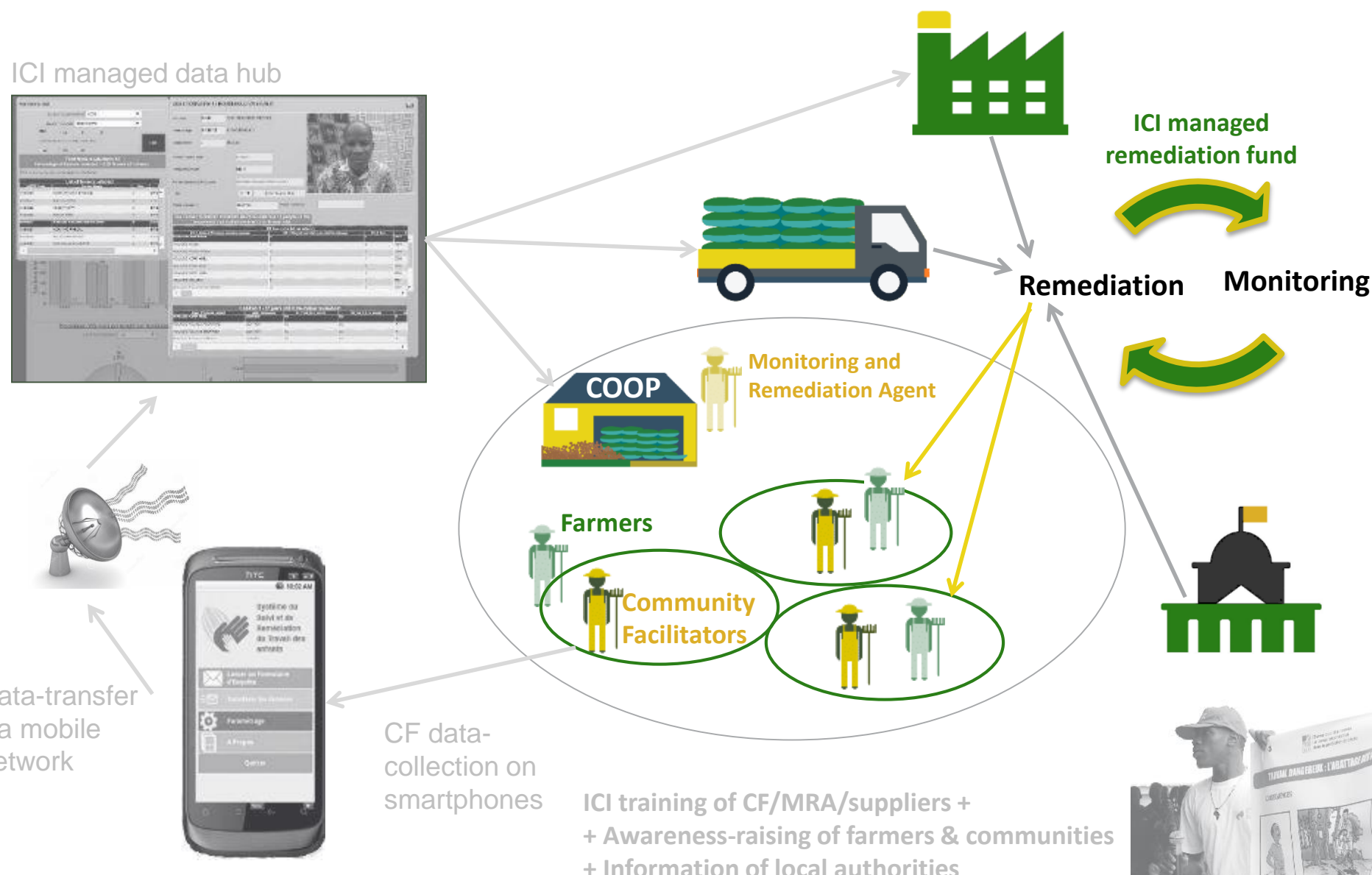


CF data-collection on smartphones

ICI training of CF/MRA/suppliers +
+ Awareness-raising of farmers & communities
+ Information of local authorities



ICI's SUPPLY-CHAIN CHILD LABOUR MONITORING & REMEDIATION SYSTEM (CLMRS)



RESULTS

– Responsible Supply Chain Management

CLMRS Results (up to March 2017) - Identification

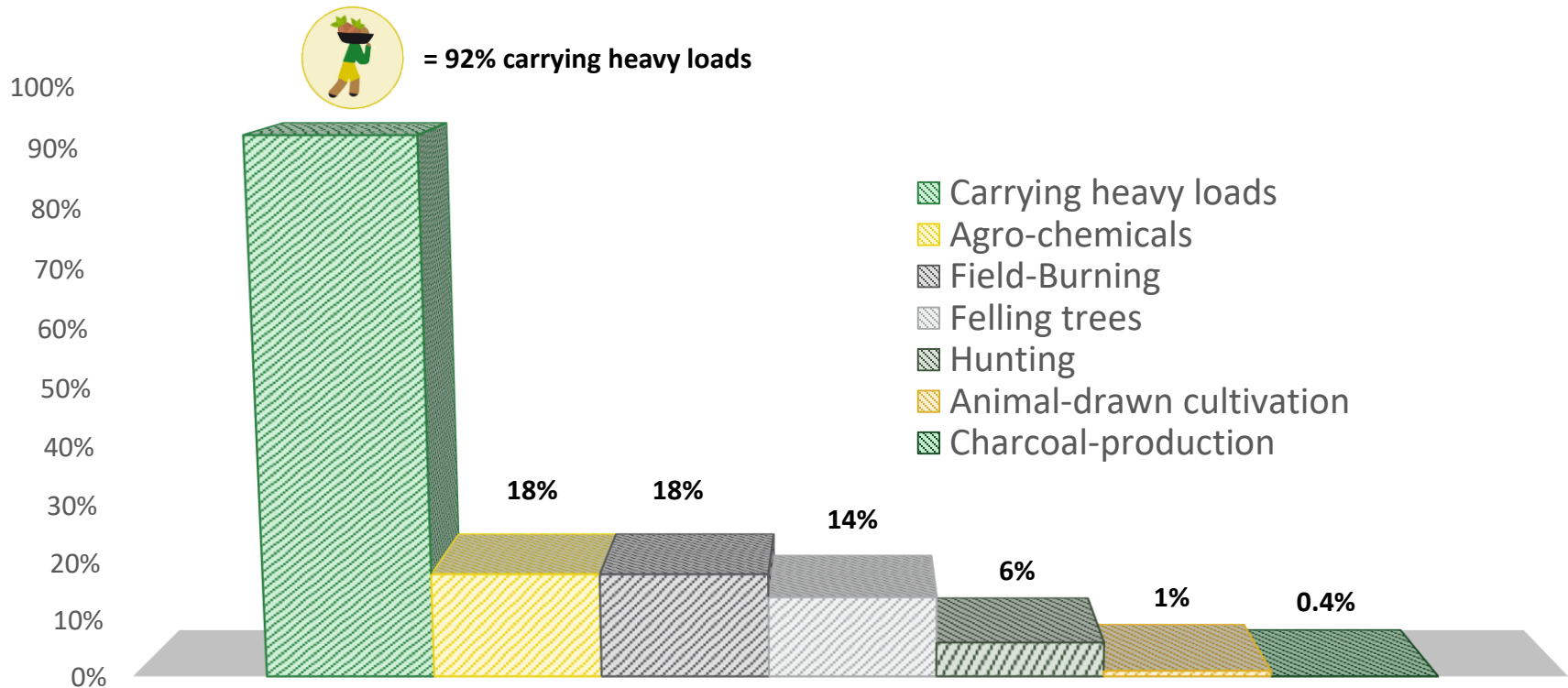
Out of 39'950 children aged 5 – 17 monitored to-date, **6'138** (17%) are found to be involved in hazardous child labour*



**Data only for the Nestlé CLMRS*

CLMRS Results (up to March 2017) – Diagnosis

Child Labour Identification by Hazardous Tasks



CLMRS Results (up to March 2017) – Remediation Assistance

4,478

Identified children
systematically followed-
up



All identified children are followed-up and, where necessary, benefit from remediation assistance

7,272

Remediation/Prevention
Actions



- Targeted Awareness-Raising
- Labour-Saving Technologies
- Educational Support (school kits etc)
- Income Generating Activities (IGA)
- Community Youth Service Groups
- Technical & Vocational Training
- School Canteens
- Birth Certificates

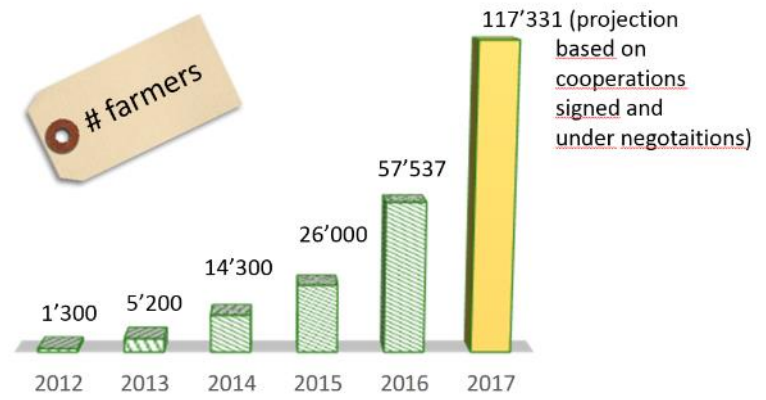
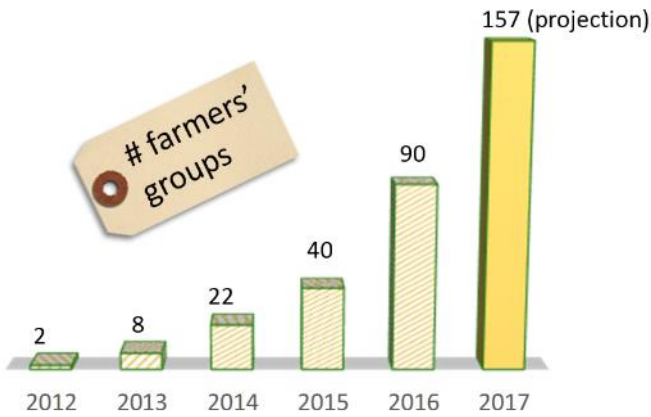
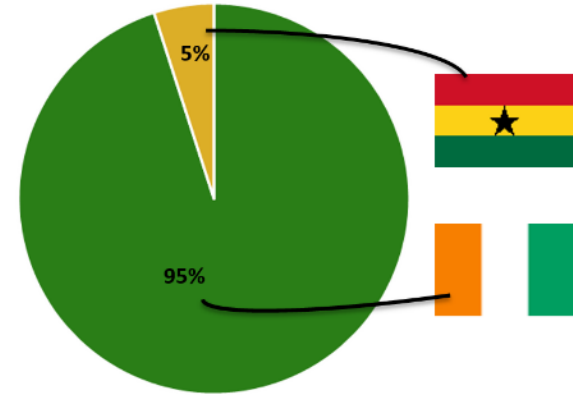
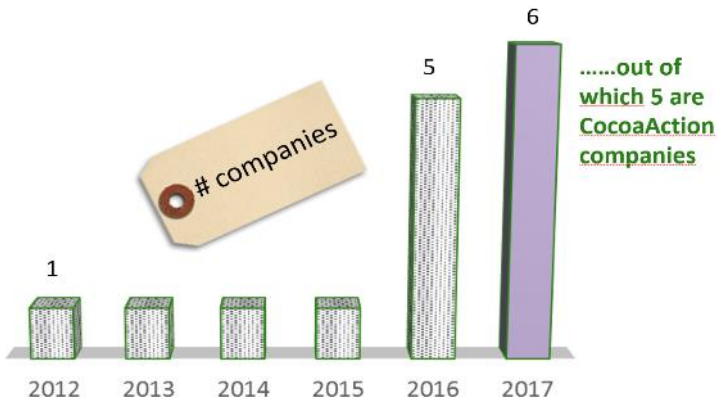
1,305

Families benefited from
alternative Income
Generating Activities



**Data only for the Nestlé CLMRS*

CLMRS Results (2012 - 2017) – Scale-Up



ICI TOOLS AND APPROACHES

- Community Development

Awareness-Raising and Training

Standardized, nationally-endorsed (CDI and Ghana) training materials and training capacity for communities, government and supply-chain actors.



Community Action Plans (CAPs) for holistic, child-centered community development



Improving Access to Quality Education

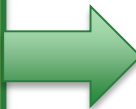
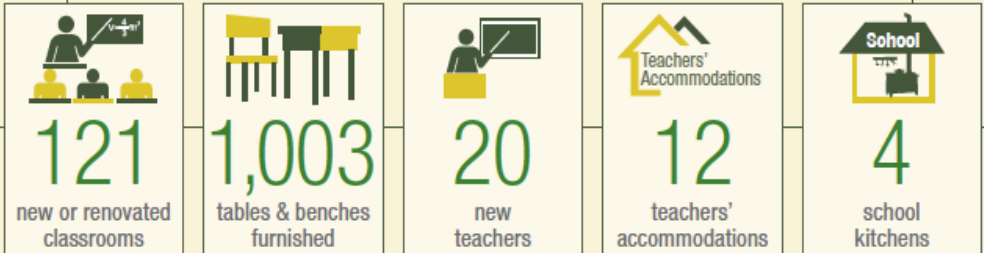
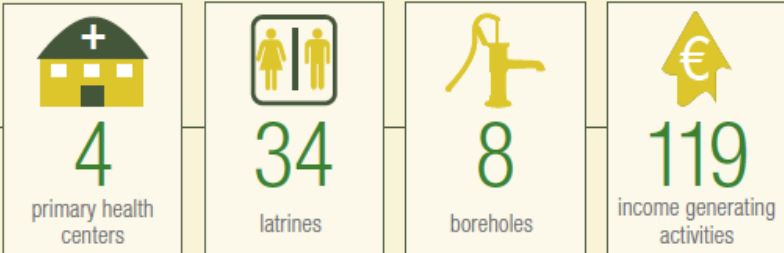


- Construction, rehabilitation and equipping of schools / classrooms (incl. canteens, desks, latrines, water).
- Teacher deployment, lodging and training.
- Capacity-building of School Management Committees.
- Literacy & numeracy acceleration classes / bridging schools.
- Birth registration.
- School kits.
- Vocational training for youth.

RESULTS – Community Development

Community Development Results (2015)

460 Community Development Actions in 157 ICI-Assisted Communities (2015)

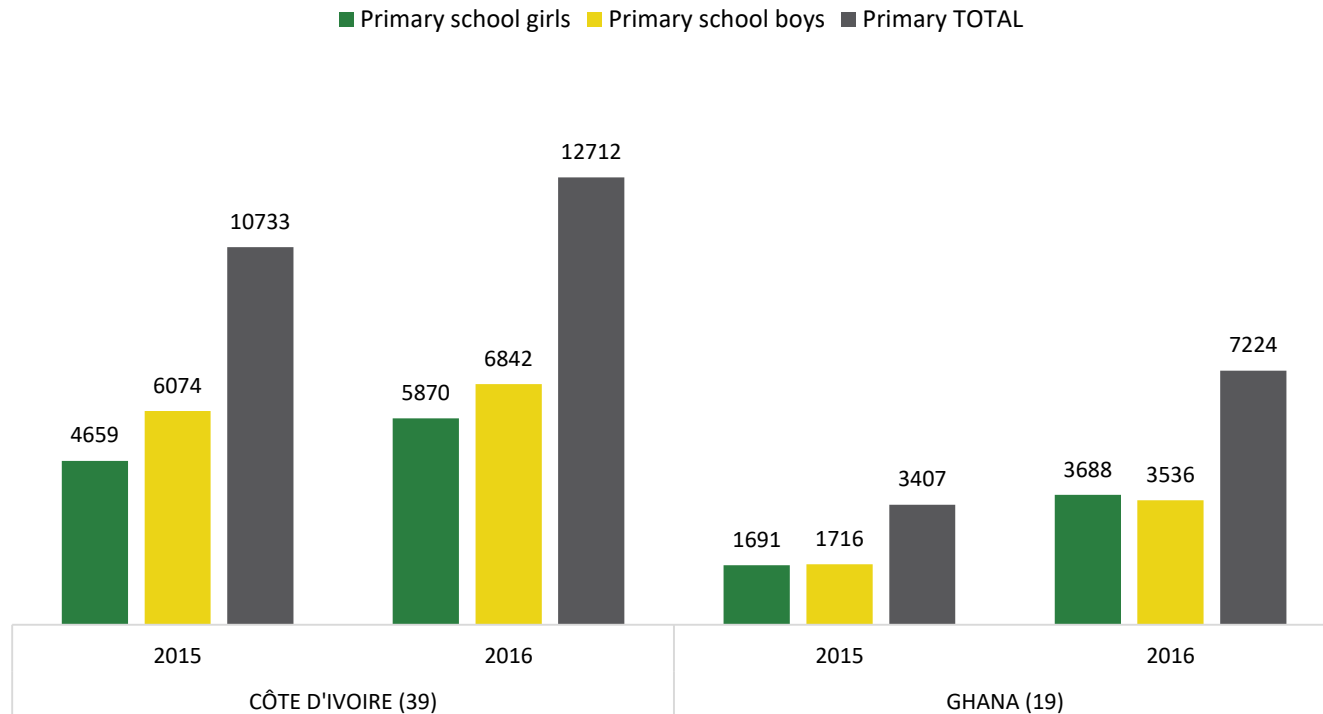


2016 Update

- 307 Community Development Actions in 75 ICI-Assisted Communities
- 5796 children newly enrolled in primary school.

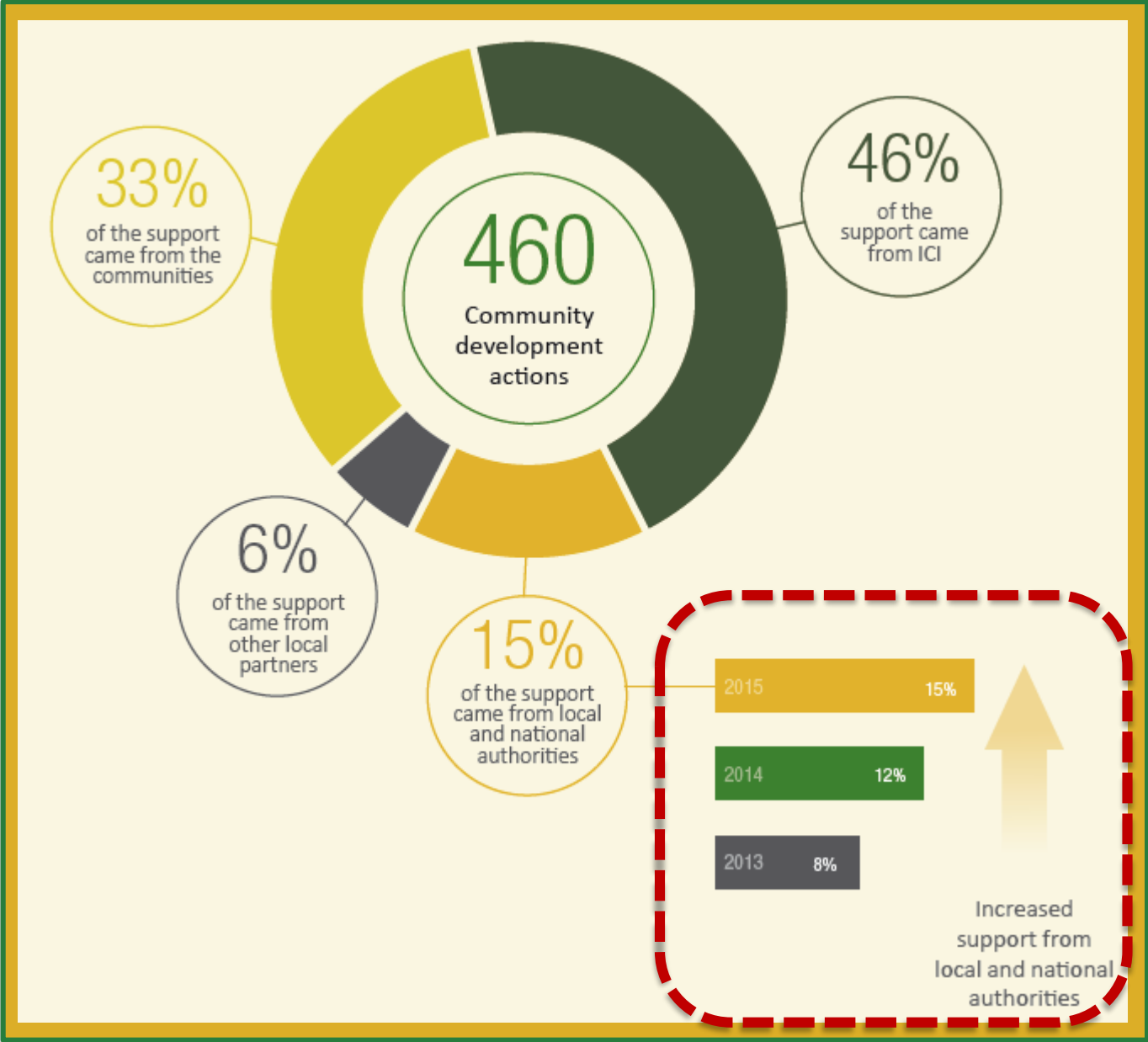
Primary School Enrolment (2015-2016)

Children's School Enrolment 2015-2016: ICI-Assisted Communities in Côte d'Ivoire and Ghana



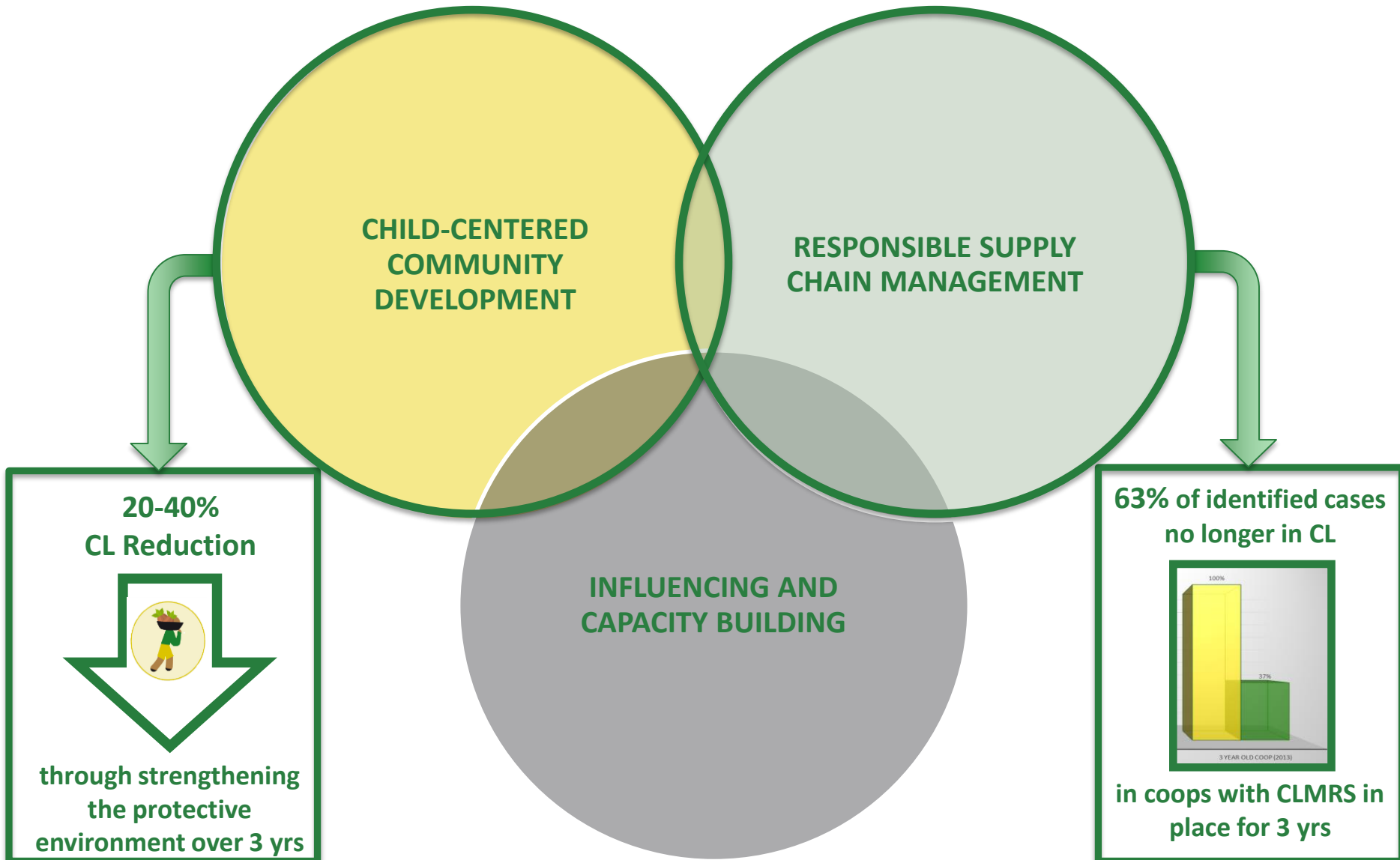
- Primary School Gross Enrolment Ratio increased from 69.8%-77.9% in Côte d'Ivoire and from 88.3%-103.9% in Ghana in 75 ICI-assisted communities.
- **5,796 children newly enrolled in primary school** in 75 ICI-assisted communities.

Community Empowerment Results (2015)



Combining Prevention & Response

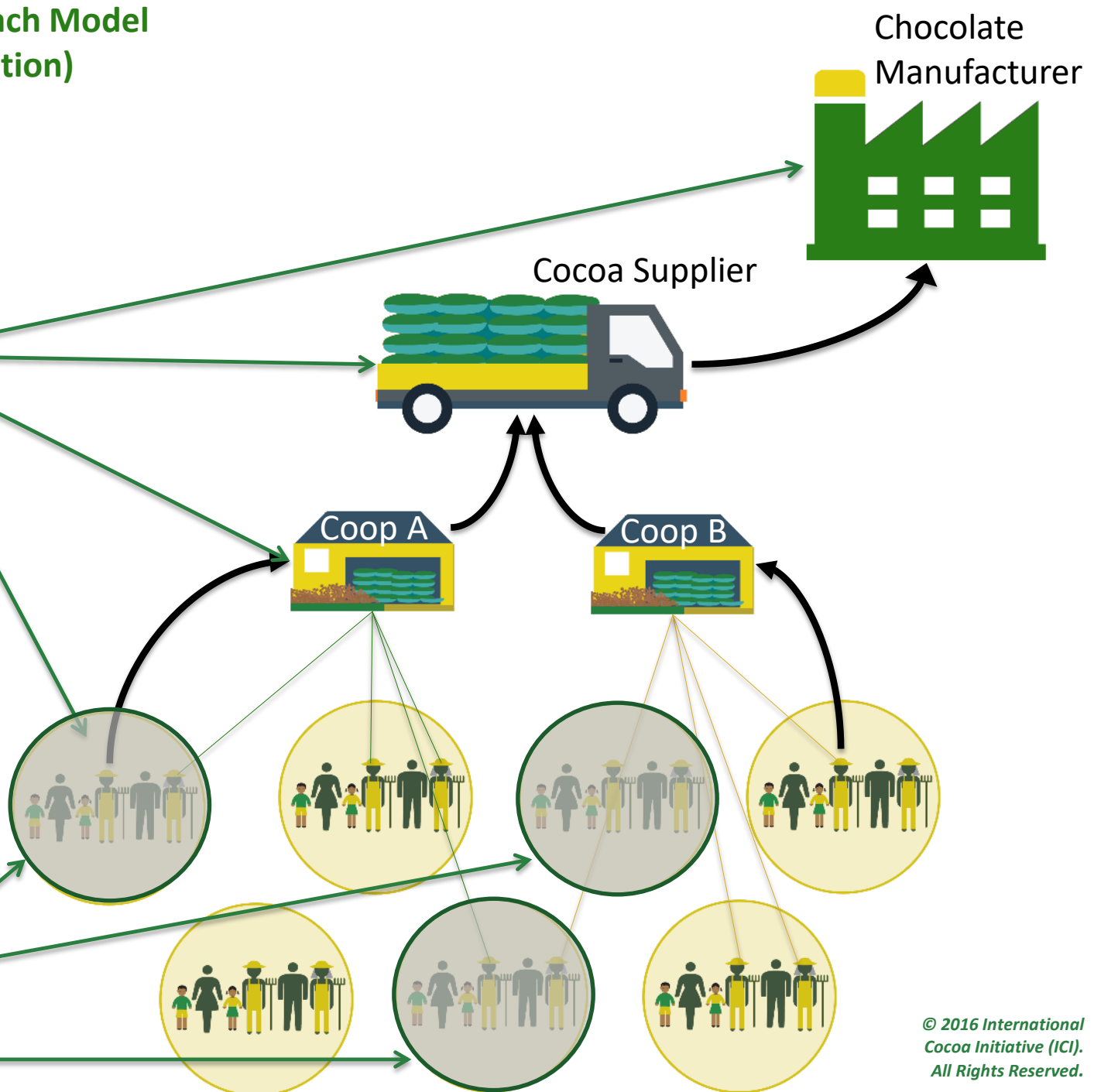
IMPACT THROUGH PREVENTION AND RESPONSE.....



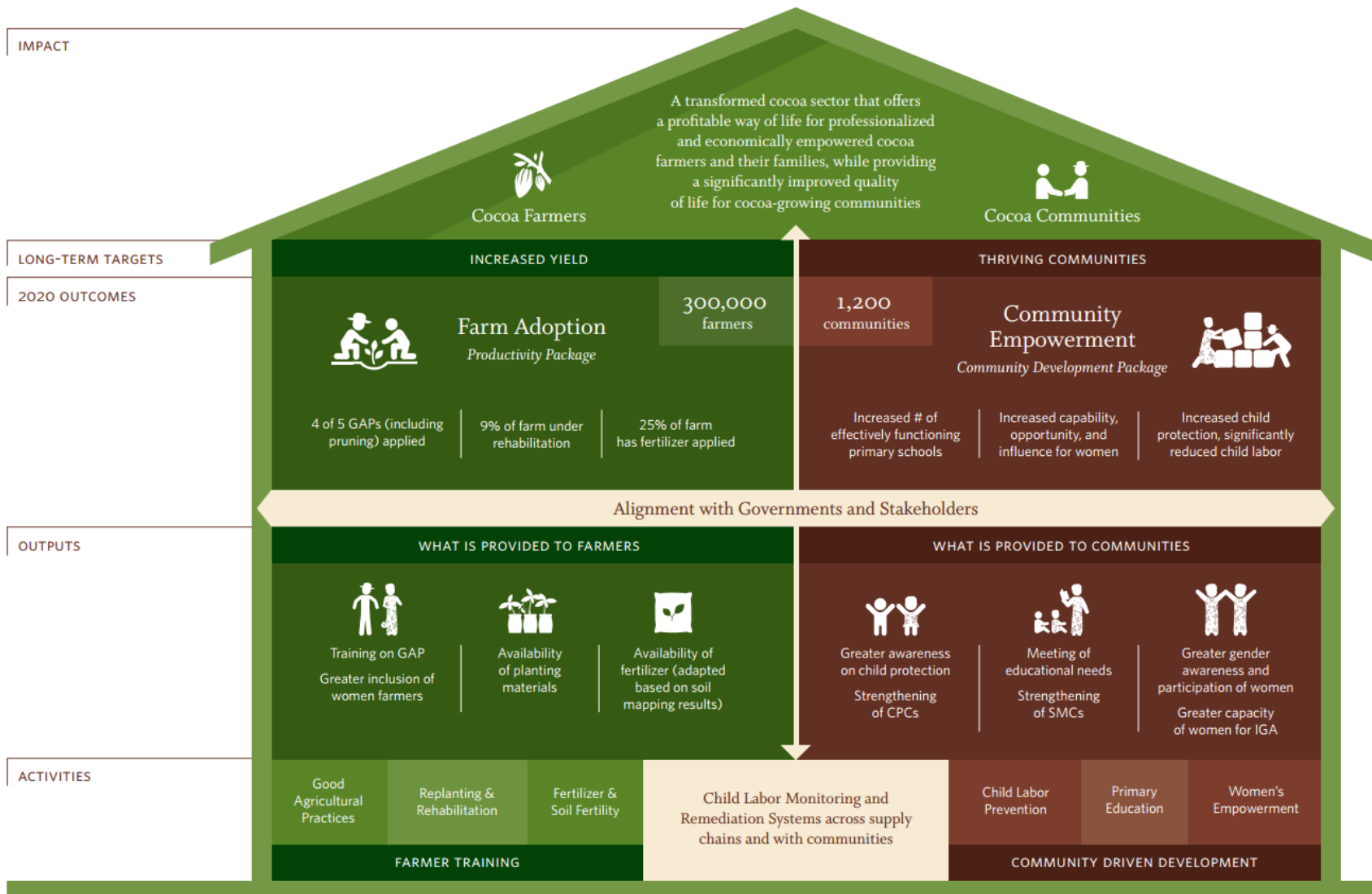
The Hybrid Dual-Approach Model (as adopted by CocoaAction)

ICI
builds supply-
chain capacities
for Child Labour
Monitoring and
Remediation...

...and targets
Child-Centred
Community
Development in
priority
communities.



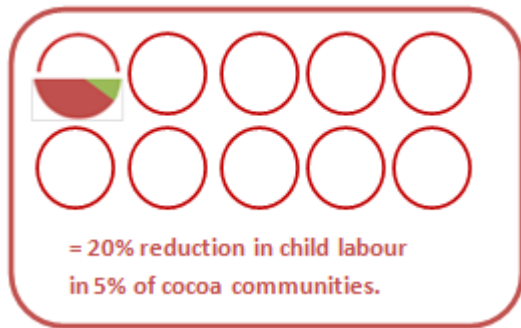
.....COMBINING COMMUNITY DEVELOPMENT WITH IMPROVED LIVELIHOODS.



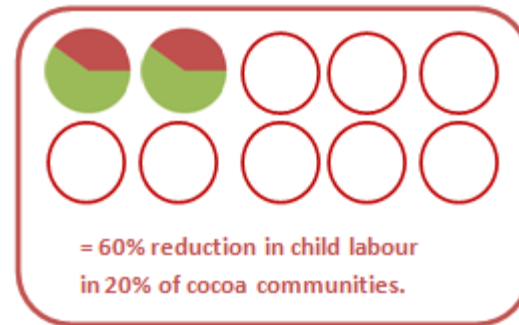
Multi-Stakeholder Collaboration

THE PROBLEM/SOLUTION MISMATCH

2005 – 2014: ICI BASIC MODEL



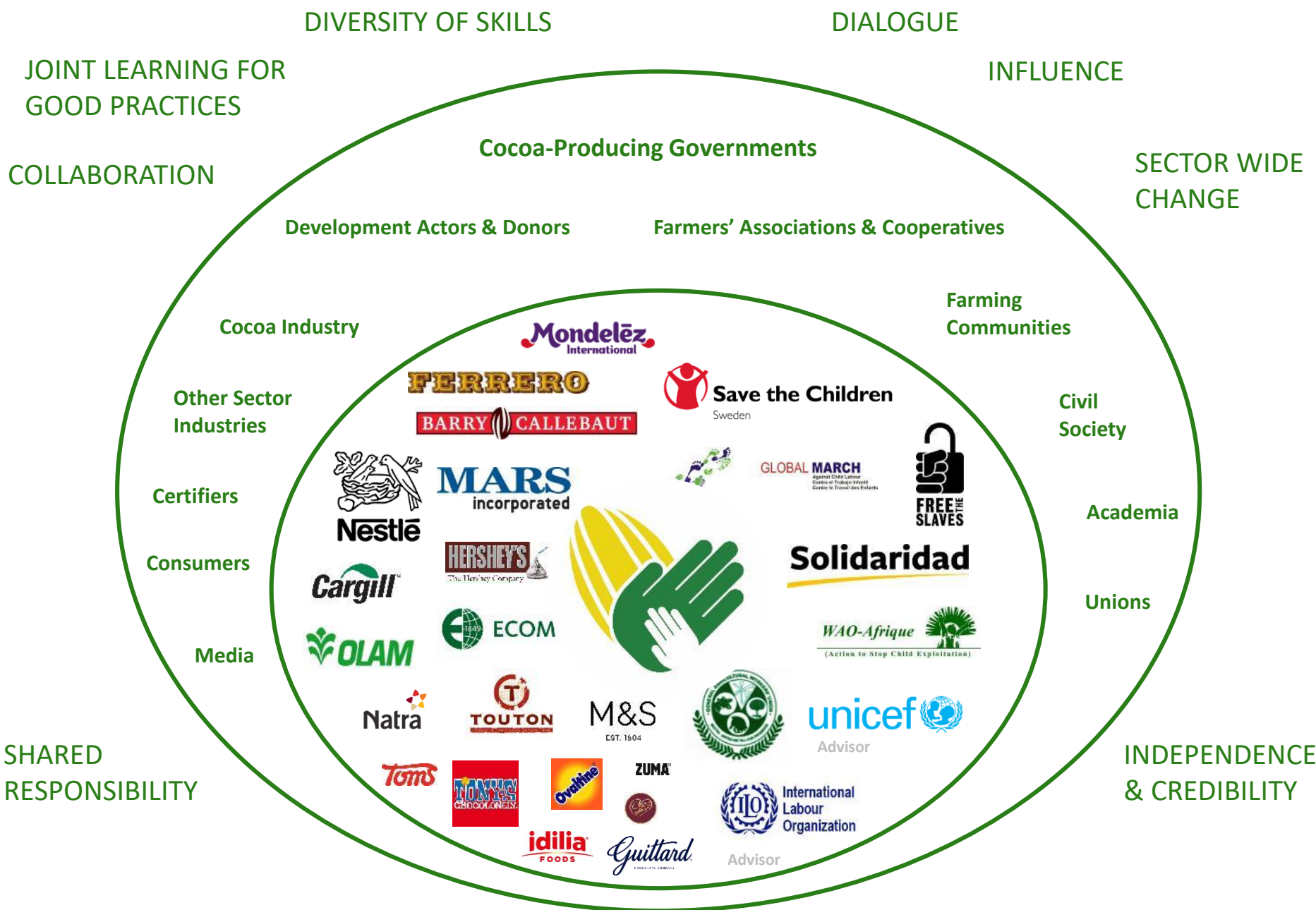
2015 – 2020: IMPROVED / EXPANDED
MODEL (incl COCOAACTION
COMMUNITY DEVELOPMENT +PRODUCTIVITY)



Starting
baseline: 35%
CL in 100% of
communities

Net 1%
CL Reduction

Net 12%
CL Reduction



ICI Board: 9 companies + 7 civil-society organisations / experts



International
COCOA
Initiative

ICI Secretariat Switzerland
Chemin de Balexert 9
1219 Châtelaine - Switzerland
+41 22 341 47 25

ICI National Office Côte d'Ivoire
Il Plateaux, 6ème Tranche, Ilot 215,
Lot 2518, Abidjan - Côte d'Ivoire
+225 22 41 09 14

ICI National Office Ghana
House #5 Mensah Wood Street,
East-Legon - Accra - Ghana
+233 302 998 870

www.cocoainitiative.org
info@cocoainitiative.org